

PACIFICA



PULSE

SHOWERSPAS

Pacifica ShowerSpa

Model #1051-G

Owner's Manual



Pacifica ShowerSpa Model 1051-G

Please Read The Following Instructions **COMPLETELY** Before Beginning!

Our goal is to ensure your installation goes smoothly and safely. Please read these instructions carefully and follow recommendations for plumbing and mounting.

After reading instructions, if you determine you do not have the necessary skills and/or tools, we recommend that a licensed plumbing contractor complete the installation.

***If you encounter any problems during installation
CALL TECHNICAL SUPPORT
TOLL FREE at 888-785-7320
Before returning your ShowerSpa to the store***

You Will Need The Following Tools

Soft pencil or felt pen to mark tile

Safety glasses

Tape measure

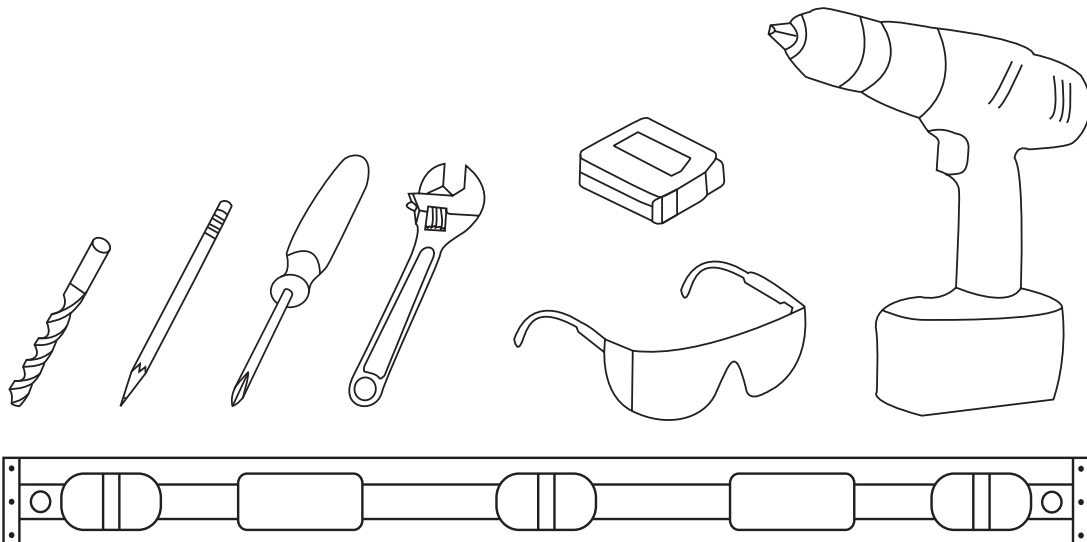
Level

Phillips screwdriver

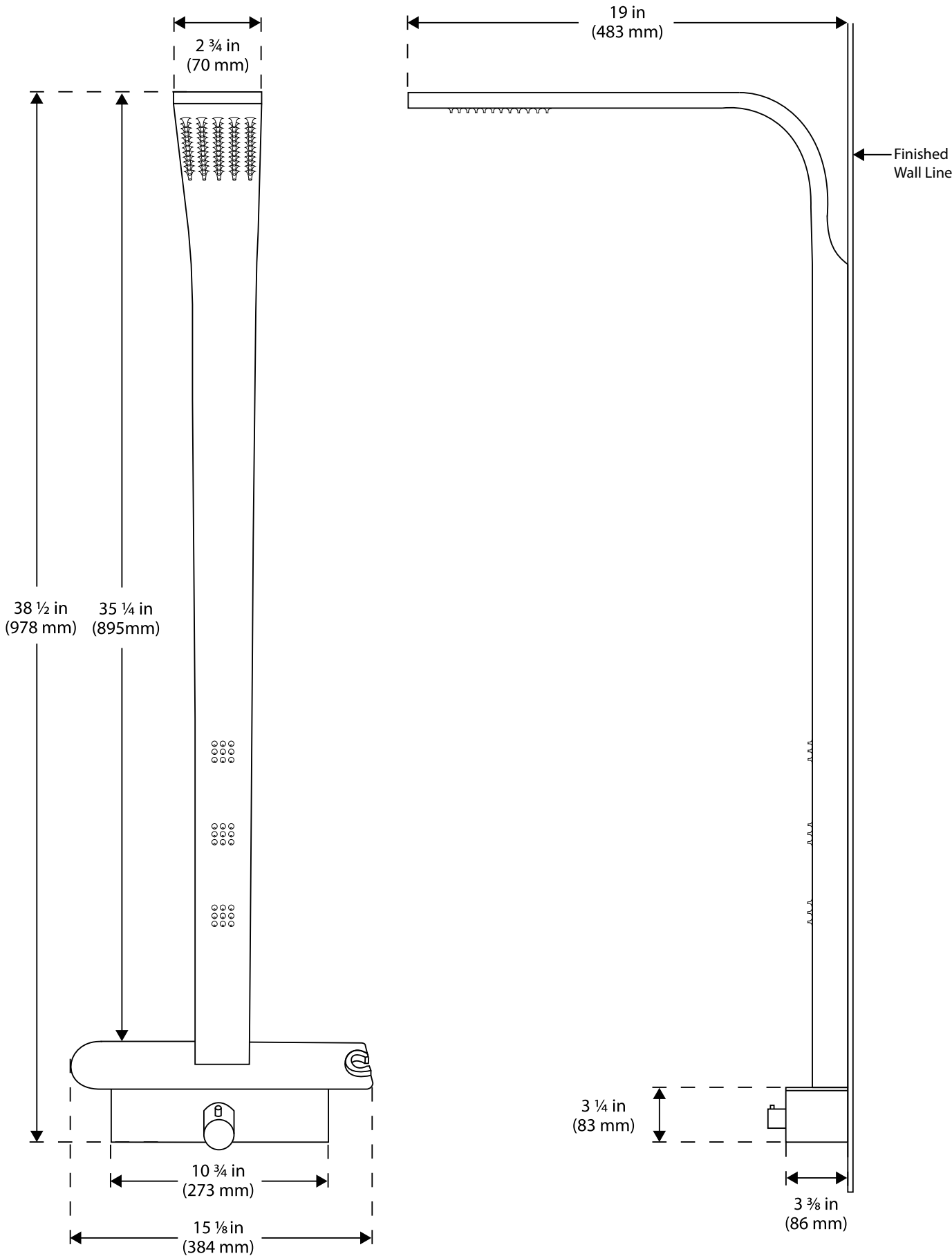
Channel locks or adjustable wrench

Drill (Preferably cordless)

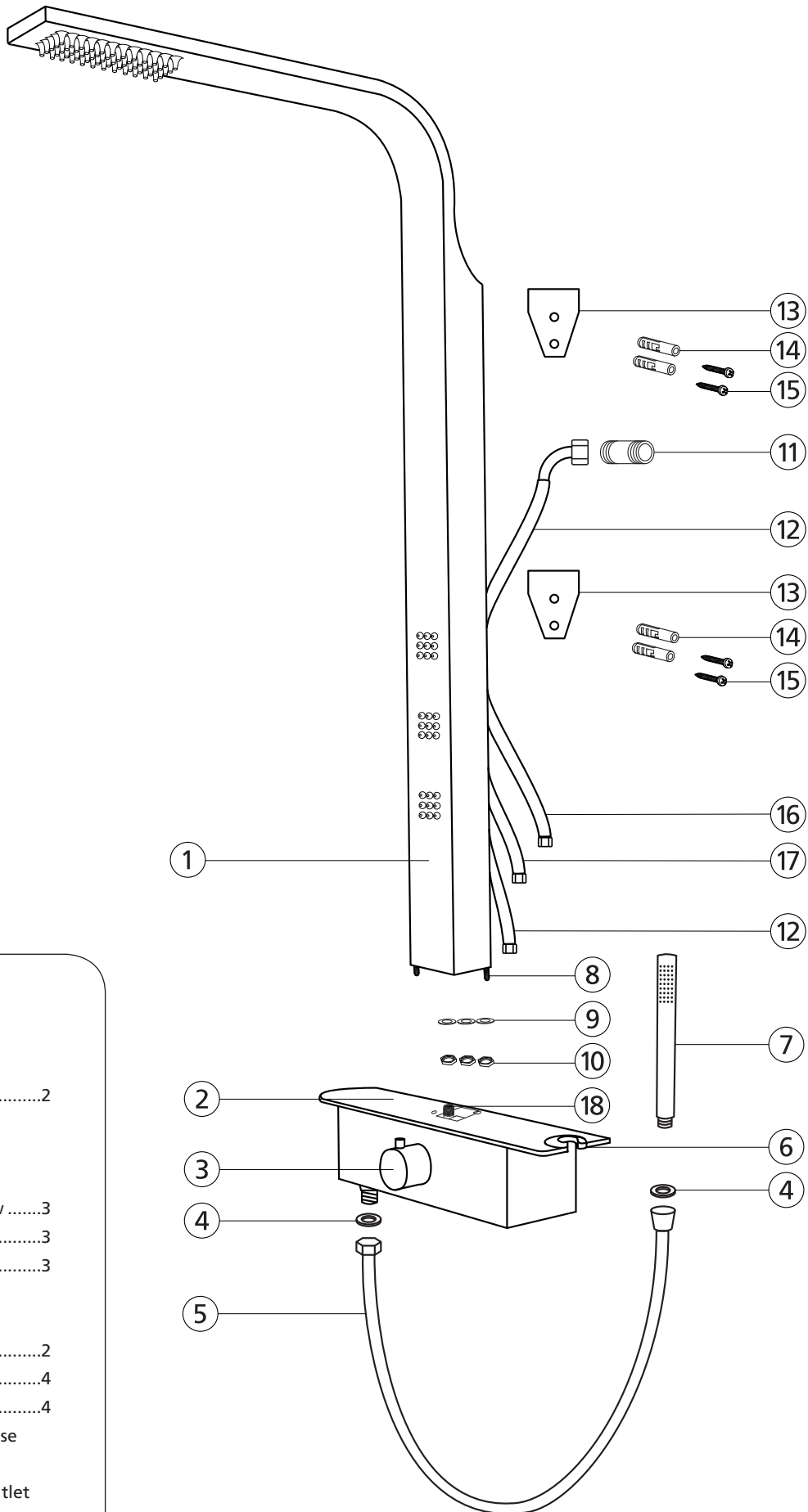
¼" Masonry drill bit



Product Dimensions



Parts Legend



- 1. ShowerSpa
- 2. Shelf
- 3. Diverter
- 4. Rubber Washer.....2
- 5. Hand Shower Hose
- 6. Hand Shower Holder
- 7. Hand Shower
- 8. Shelf Mounting Screw3
- 9. Metal Washer3
- 10. Shelf Mounting Nut.....3
- 11. ½" x 2" NPT Nipple
- 12. Supply Hose
- 13. Wall Mount Bracket.....2
- 14. Nylon Wall Anchor4
- 15. Wall Mount Screw.....4
- 16. Rain Shower Head Hose
- 17. Body Jet Hose
- 18. Rain Shower Head Outlet

Assembly

After unpacking your ShowerSpa, some assembly is required prior to installation.

Shelf Assembly

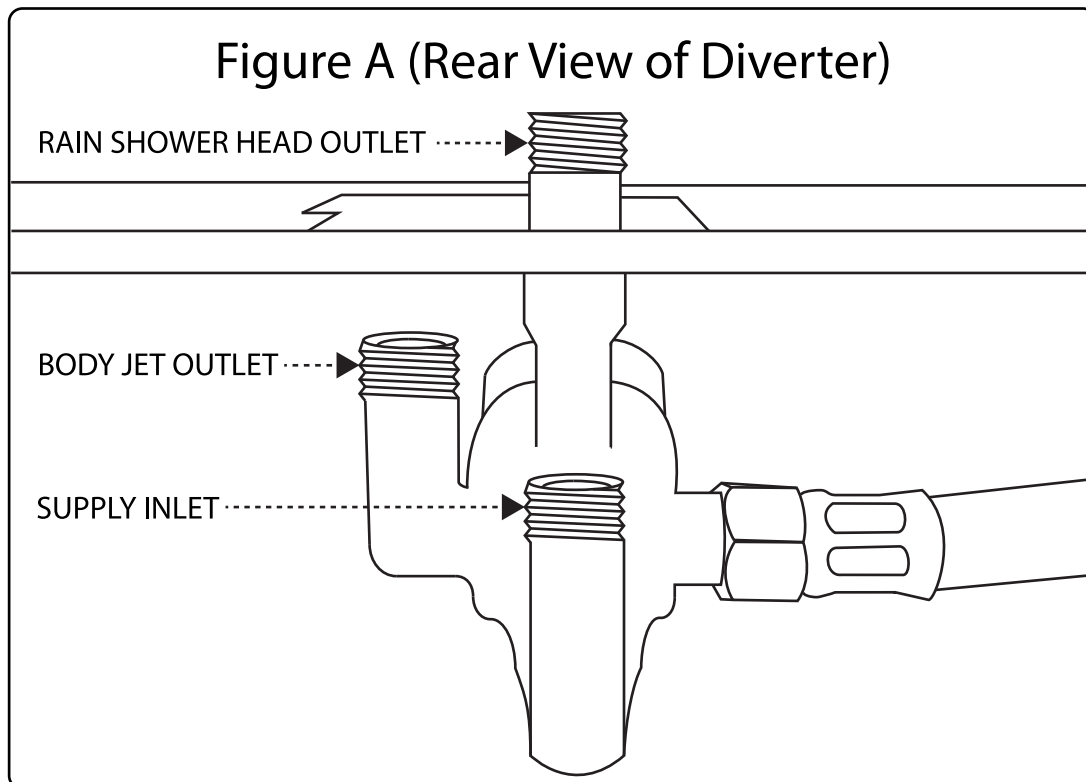
1. Place ShowerSpa (1) onto top of shelf (2) and insert shelf mounting screws (8) through holes.
2. Place metal washers (9) on screws (8) and secure shelf mounting nuts (10) to underside of shelf. Use an adjustable wrench to tighten.

Diverter Hose Assembly

1. Attach jet hose (17) to jet outlet (not shown) located on diverter (3). Make sure jet hose (17) is attached to outlet located on right side when facing ShowerSpa (1). Tighten with adjustable wrench.
2. Attach rain shower hose (16) to rain shower outlet (18) which is the highest outlet located left of jet outlet on diverter (3) when facing unit. Tighten with adjustable wrench.
3. Attach supply hose (12) to supply inlet (not shown) located on diverter (3). Make sure supply hose (12) is attached to outlet which is located closest to back of ShowerSpa (1). Tighten with adjustable wrench.

Hand Shower Assembly

1. Insert washer (4) into hexagon-shaped end of hand shower hose (5) and attach to threaded outlet on bottom of ShowerSpa. Do not over-tighten.
2. Insert washer (4) into tapered end of hand shower hose (5) and attach to hand shower (7). Insert hand shower into holder (6).



Installation

Thank you for choosing the Pacifica Shower System by PULSE ShowerSpas!

Assembly and installation of the Pacifica ShowerSpa is designed to be quick and easy. If you have installation questions or performance problems, call PULSE Customer Service toll free at 888-785-7320 or visit www.pulshowerspas.com.

Please read instructions carefully, become familiar with all parts, installation procedures, and tools required. Follow the steps in the order presented to help avoid any mistakes.

FOR NEW CONSTRUCTION OR COMPLETE REMODEL

- A hot/cold mixing valve is required (NOT INCLUDED)
- Nipple should extend ½" past finished wall surface

FOR FIBERGLASS ENCLOSURES

IMPORTANT: PULSE does not recommend mounting through fiberglass wall surfaces without adequate wood or sheetrock backing! If mounting Pacifica to a fiberglass wall you must purchase appropriate mounting hardware (sold separately).

TOOLS REQUIRED

Phillips screwdriver, adjustable wrench, level, pencil or marker, drill, ¼" masonry/tile drill bit.

INSTALLATION

1. Remove your showerhead and escutcheon (trim cover) from your existing shower arm. Leave shower arm in place.
2. Determine the length of brass NPT nipple (11) needed:
 - a. Place mark on existing shower arm at wall surface. Unscrew shower arm from elbow in wall.
 - b. Measure distance from mark on shower arm to end of shower arm threads. Add ½" to this measurement, and then round to nearest ½".

Example 1: If measurement = 1¼", add ½" = 1¾", rounded = 2" NPT nipple—this is the length needed.

Example 2: If measurement = 1⅝", add ½" = 2⅛", rounded = 2" NPT nipple—this is the length needed.

NOTE: If ½" X 1½" nipple (1) provided is not correct length based on previous formula, it may be necessary to purchase required length ½" NPT brass nipple (available at most hardware stores in ½" incremental lengths).

3. Apply a generous amount of PTFE (plumber's) tape to both ends of nipple (11) and screw nipple into fitting which old shower arm was screwed into. **DO NOT OVERTIGHTEN.**
4. Hold Pacifica up to the wall and determine preferred mounting location. Evaluate showerhead and body jet heights, making certain supply line (12) reaches nipple (11).
5. Use a level to check for vertical (plumb) position.
6. Mark wall at wall mount crossbar locations found on back of Pacifica for reference.
7. Reposition mounts (13) to marks on wall. Mark location of screw holes in each mount on wall for drilling.
8. For solid surface walls (tile, marble, granite, etc.) use a masonry/tile bit and drill a ¼" hole at marks for each mount that is 1½" deep. **BEWARE—LIVE PLUMBING IN WALL!**
9. Insert nylon anchors (14) into holes and secure mounts (13) to wall with mounting screws (15).
10. Insert rubber washer (4) into hexagon shaped end of supply hose (12) and tighten onto nipple (11) with adjustable wrench. **DO NOT OVERTIGHTEN!**
12. Place Pacifica onto wall mounts.
13. **OPTIONAL**—Seal around body of ShowerSpa with a bead of silicone. **DO NOT SEAL BOTTOM!**

Usage

Brass Diverter

The brass diverter is used to change between ShowerSpa functions. Simply rotate the diverter knob either direction to select the desired function—top for showerhead, left for hand shower, or right for body jets.

Rain Showerhead

The rain showerhead provides the relaxing feel of soft rain with silicone tips for rub clean, Spray-Straight™ performance.

Hand Shower

The brass hand shower has a sleek wand-shaped design that delivers a satisfying power-spray pattern with a 1.5M - 1.8M stainless steel stretch hose.

Body Jets

Three single-function jets provide a soothing spray with silicone tips for rub clean, Spray-Straight™ performance.

Care and Maintenance

Always blot dry any water from the surface of your ShowerSpa. To protect your ShowerSpa from hard water stains and mineral deposits, use an auto spray wax periodically and wipe down your ShowerSpa after each use. Allowing water to evaporate on the surface can lead to a buildup of mineral deposits. Cleaning with a damp, non-abrasive sponge and drying with a clean, soft cloth should help keep your ShowerSpa looking beautiful.

R E M E M B E R

Never use any abrasives or harsh cleaners!

Clean with mild soap and water ONLY!

To keep your ShowerSpa in pristine condition,

DRY AFTER EACH USE!

Manufacturer's Limited Warranty

PULSE ShowerSpas, Inc. warrants that all ShowerSpas are free from defect in workmanship and/or materials for a period of three years from the date of purchase. This warranty extends to the original purchaser only and is non-transferable.

This warranty does not cover, and PULSE ShowerSpas will not pay for any conditions, malfunctions or damages resulting from (1) normal wear and tear, improper installation (whether performed by a contractor, a service company or the consumer), improper maintenance, misuse, abuse, negligence, accident or alteration; (2) the use of abrasive, caustic or "no-rinse" cleaning agents; (3) the use of the product in any manner contrary to the product instruction; (4) any condition in the home such as excessive water pressure or corrosion.

Should any ShowerSpa be determined by PULSE ShowerSpas, Inc. to be defective in normal residential use, at the option of PULSE ShowerSpas, Inc., such product shall either be replaced or repaired and returned to the customer free of defects. The consumer shall give notice of any defects to PULSE ShowerSpas, Inc. within thirty days of discovery of such defect.

Proof of purchase (original sales receipt) must be provided to PULSE ShowerSpas, Inc. with all warranty claims.

PULSE ShowerSpas, Inc. is not responsible for any labor charges, removal charges, installation or other consequential costs. In no event shall the liability of PULSE ShowerSpas, Inc. exceed the purchase price of the ShowerSpa.

Some states/provinces do not allow limitations of how long an implied warranty lasts or the exclusion or limitation of such damages, so these limitations and exclusions may not apply to you. This warranty gives the consumer specific legal rights. You may also have other rights that vary by state/province.

Follow manufacturers recommended installation. Use caution with children under ten years of age. Do not use ShowerSpa as a support device. Do not use harsh chemicals or abrasives when cleaning. Turn water supply off when servicing your ShowerSpa.



PULSE
SHOWER SPAS

Pulse ShowerSpas, Inc. ~ 297 Anna Street ~ Watsonville, CA 95076 ~ 888.785.7320
info@pulseshower spas.com ~ www.pulseshower spas.com ~ support@pulseshower spas.com