



PULSE

SHOWERSPAS

Installation Instructions
Bonzai Rain Shower System
Model # 1017



Invigorate. Decorate. Rejuvenate.

Congratulations on your purchase of a Bonzai PULSE Showerspa. We take great pride in the styling, quality and workmanship of this product. With proper installation and care, your Showerspa will give you a showering experience like never before. Get ready to start your day in a whole new way and **FEEL THE PULSE!**

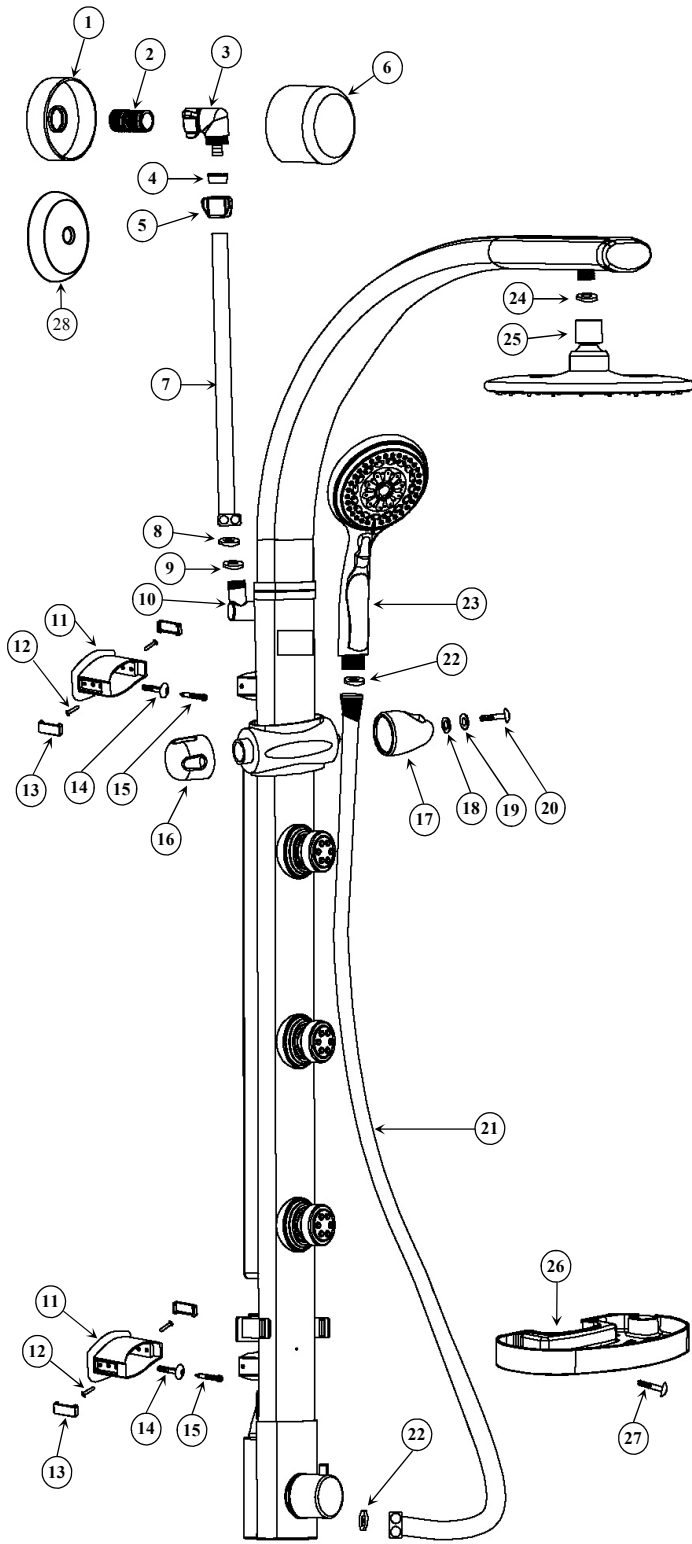


Figure A

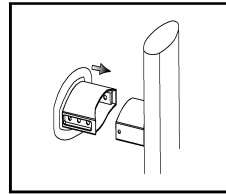


Figure B

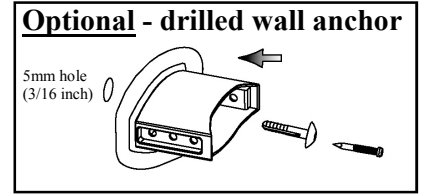


Figure C

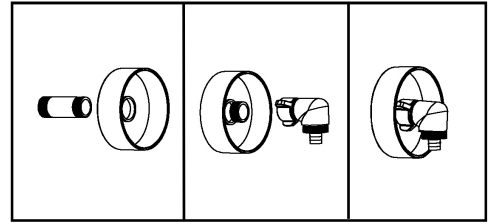


Figure D

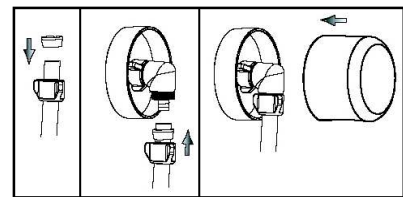


Figure E

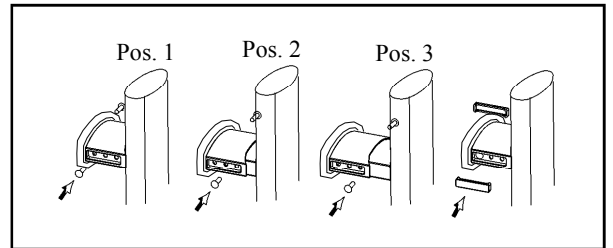
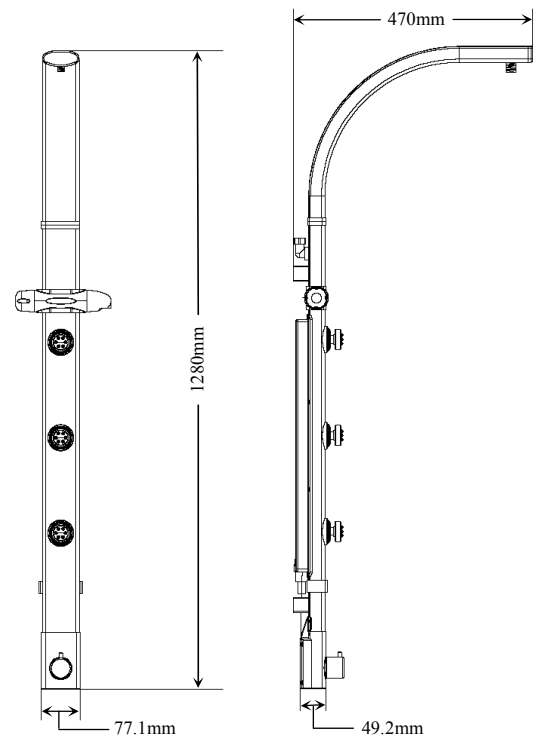


Figure F

#	Part Description	Qty.	#	Part Description	Qty.
1.	escutcheon base plate w/tape	1	15.	wall anchor pin/nail - (optional)	2
2.	½ inch x 2½ inch brass nipple	1	16.	handle	1
3.	90° connector w/cone washer	1	17.	handshower holder	1
4.	tapered plastic compression washer	1	18.	hexagon washer	1
5.	chrome finned compression nut	1	19.	stainless steel washer	1
6.	escutcheon cover	1	20.	#4 X 5/8" Philips head screw	1
7.	18 in. (46 cm) PVC supply line	1	21.	59 in. (1.5M) PVC handshower hose	1
8.	2.5gpm. (9.5lpm) flow restrictor	1	22.	4mm round handshower washer	2
9.	rubber washer with screen	1	23.	handheld shower w/check valve	1
10.	90° Showerspa supply Inlet	1	24.	6mm round showerhead washer	1
11.	wall mount w/adhesive tape	2	25.	8 in. (200mm) rain showerhead	1
12.	#4 X 5/8". Philips head screw	4	26.	ABS shelf	1
13.	wall mount cover plate	4	27.	#4 X 1/2" Philips head screw	1
14.	mushroom wall anchor - (optional)	2	28.	"Optional" thin escutcheon	1



Thank you for choosing the
Bonzai Rain Shower System Model #1017
By PULSE Showerspans Inc.

Installation of the Bonzai Rain Shower System is designed to be quick and easy. If you have any installation issues or performance problems, call technical support toll free at 888-785-7320 or email support@pulseshowerspans.com before returning this product. For helpful installation video go to: http://www.pulseshowerspans.com/flash/bonzai_installation.html

Please read instructions carefully to become familiar with components **[Figure A]**, installation procedures and tools required. Follow steps in the order presented to avoid mistakes.

What is needed: Philips screwdriver, adjustable wrench, level, pencil/marker, Isopropyl alcohol.
What may be needed: Cordless drill, 3/16" inch (5mm) masonry/tile drill bit, hammer, hair dryer

Determine general mounting location: The Bonzai is designed to easily mount in virtually any shower or tub/shower configuration! With a two handled valve (separate handle for hot & cold) we suggest installing the Bonzai centered between the two handles. With a single handle valve, the Bonzai can be mounted above the valve (typical tub/shower configuration) or on either side of the valve. The unique pivoting shower arm and adjustable body sprays ensure perfect positioning!

Getting started:

1. Remove the showerhead and escutcheon (trim cover) from your existing shower arm.
2. Determine minimum length NPT nipple (2) required:
 - a) Place a mark on existing shower arm at the wall surface.
 - b) Unscrew shower arm from elbow in wall.
 - c) Measure distance from mark made on shower arm to end of shower arm threads that were previously inserted in wall.
 - d) Add ½ inch to this measurement, and then round up to nearest ½ inch. (i.e. if measurement = 1¾ inches, add ½ inch = 2¼ inches, rounded up to nearest ½ inch = 2½ inch NPT nipple. This is the minimum length required with maximum length to be plus 1 inch.
NOTE: If supplied 2½ inch nipple (2) is not the correct length based on above formula, you must obtain correct size - sold separately.
3. Apply generous amount of Teflon tape and/or pipe sealant to nipple (2) and adequately tighten into elbow in wall to ensure no leaks. Do not damage or mar final ½ inch of nipple threads protruding from wall.
4. Insert rubber washer with screen (9) into hexagon fitting of supply line (7) and connect to 90° inlet (10). Do not over-tighten.
5. Slide female wall mounts (11) over their male counterparts. **[Figure B]** *NOTE: Do not remove covering on special adhesive tape!*
6. Hold Bonzai up to the wall and determine mounting location; evaluating showerhead and body spray heights making certain supply line (7) reaches NPT nipple (2). Use a level to check for vertical (plumb) position. It is ideal to position entire surface area of mounts (11) on flat, non-porous surface. (i.e. no grout lines or uneven surfaces.) Once confident of Bonzai's position, mark the wall at top & bottom mounts (11) for reference.
7. **Mounting locations on wall must be thoroughly cleaned of all residues with a 50:50 mix of Isopropyl alcohol and water. The area must be completely dry before adhering mounts to wall surface. Ideal application temperature is 70°F or above and no less than 60°F.**
8. Remove covering of special adhesive tape on wall mounts (11) and carefully position Bonzai onto wall at predetermined location.
IMPORTANT: Apply a consistent firm pressure equal to 15psi against the wall surface for at least 1 minute.
NOTE: At 70°F approximately 50% of ultimate bond strength will be achieved after 20 minutes, 90% after 24 hours and 100% after 72 hours. Ultimate bond strength can be achieved more quickly (and in some cases bond strength can be increased) by exposure of the bond to elevated temperatures (e.g. 150°F (66°C) for 1 hour. A common hair blow dryer can be used to accelerate the cure time
9. Carefully slide the Bonzai out of the female wall mounts while the tape bonds to wall surface. If using this drill-less installation technique, it is highly recommended to wait at least 24 hours before continuing the installation (Step #12) or introducing any moisture.
10. To further secure mounts (11) with nylon wall anchors (14) in solid surface walls (tile, marble, granite etc.) use a 3/16 inch (5mm) masonry/tile drill bit and slowly drill a 1¼ inch (32mm) deep hole through existing hole of female mounts. **CAUTION: live (active) plumbing is behind the wall!**
NOTE: If mounting Bonzai with wall anchors through a fiberglass wall you must purchase appropriate type mounting anchors (Qty 2) for this type of wall surface. – sold separately. PULSE does not recommend mounting through fiberglass wall surfaces without adequate wood or sheetrock backing!
11. Insert nylon anchor (14) through the female mount (11) making sure mushroom head is seated firmly against mount and mount is firmly seated against wall. Using a hammer, tap nail (15) into nylon anchor body until flush with nylon head. **[Figure C]**
12. Remove covering of two faced tape on escutcheon base plate (1) and slide over nipple (2) securing base plate to wall. *NOTE: Optional thin escutcheon (28) is provided for installations where the ABS escutcheon (6) interferes with desired mounting height of Showerspa.*
HINT: For best finished look when using thin escutcheon (28), nipple should only extend ½-¾ inch (12-19mm) from wall surface.
13. Secure 90° connector with cone washer (3) to nipple. Do not over-tighten. **[Figure D]** *NOTE: Cone washer is already installed on 90° connector.*
14. Insert Bonzai into wall mounts. Determine length of supply line (7). Supply line must install completely over barbed portion of 90° connector (3). To shorten, remove Bonzai from wall and cut supply line with sharp utility knife.
15. Re-insert Bonzai into wall mounts, slide compression nut (5) followed by tapered end of compression washer (4) over supply line hose (7). Push hose onto barbed portion of 90° connector (4) and secure with compression washer and nut. Do not over-tighten. Push escutcheon cover (6) into base plate (1). **[See Figure E]** *HINT: Apply small amount of liquid soap to help hose slide onto barbed connection.*
16. Select mounting hole for required spacing from wall and secure with Philips head screws (12). Do not over-tighten. Insert chrome covers (13) into mounts to hide screws. **[See Figure F]**
17. Thread handle (16) into left side of hand shower mount. Align hanger (17) on right side followed by hexagon washer (18), round washer (19) and secure with screw (20).
18. Insert 4mm rubber washer (22) into each end of hand shower hose (21) and secure to Bonzai and hand shower (23).
19. Insert 6mm washer (24) into shower head (25) and securely tighten to Bonzai.
20. Carefully insert ABS shelf (26) into mounting bracket until tabs lock in place. Secure shelf to Bonzai body with Philips screw (27)
21. You are now ready to enjoy your new Bonzai Rain Shower System by PULSE Showerspans, Inc.



PULSE

SHOWERSPAS

Care and Maintenance

Clean your Bonzai Rain Shower system with mild soap and water only. Blot dry after each use. To help protect your Showerspa from hard water stains and mineral deposits, use an auto spray wax every three to four months. Never use harsh chemicals or abrasive cleaners! Drying with a clean soft cloth after each use will keep your Bonzai Rain Shower system looking new for years to come.

IMPORTANT: If performance is not meeting your satisfaction, check for debris in mesh washer (9) and or remove the flow restrictor (8) from inlet supply line (7). [See Figure A]

Remember: Never use abrasives or harsh chemical cleaners! Soap and water does the trick!

Manufacturer's Warranty

PULSE Showerspaspas, Inc. warrants that all Showerspaspas are free from defect in workmanship and/or materials for a period of three years from the date of purchase. This warranty extends to the original purchaser only and is non-transferable.

This warranty does not cover, and PULSE Showerspaspas will not pay for conditions, malfunctions or damages resulting from (1) normal wear and tear, improper installation, whether performed by a contractor, service company or the consumer, improper maintenance, misuse, abuse, negligence, accident or alteration; (2) the use of abrasive and/or caustic cleaning agents or "no-rinse" cleaning products or the use of the product in any manner contrary to the product instruction; or (3) conditions in the home such as excessive water pressure or corrosion.

Should any Showerspa be determined by PULSE Showerspaspas, Inc. to be defective in normal residential use, at the option of PULSE Showerspaspas, Inc., such product shall either be replaced or repaired and returned to the customer free of defects. The consumer shall give notice of any defects to PULSE Showerspaspas, Inc. within thirty days of discovery of such defect.

Proof of purchase (original sales receipt) must be provided to PULSE Showerspaspas, Inc. with all warranty claims. PULSE Showerspaspas, Inc. is not responsible for labor charges, removal charges, installation or other consequential costs. In no event shall the liability of PULSE Showerspaspas, Inc. exceed the purchase price of the Showerspaspas.

Some states/provinces do not allow limitations of how long an implied warranty lasts or the exclusion or limitation of such damages, so these limitations and exclusions may not apply to you. This warranty gives the consumer specific legal rights. You may also have other rights that vary from state/province to state/province.

Follow manufacturers recommended installation. Use caution with children under ten years of age. Do not use Showerspaspas as a support device. Do not use harsh chemicals or abrasives when cleaning. Turn water supply off when servicing Showerspaspas.

*PULSE Showerspaspas, Inc. ♦ 49-A Hangar Way Watsonville, CA 95076 ♦ U.S.A.
Tel: 831-724-7300 ♦ Fax: 831-724-7390 ♦ Toll Free: 888-785-7320
Email: support@pulseshowerspaspas.com ♦ website: www.pulseshowerspaspas.com*