



# PULSE

SHOWERSPAS

## *Manufacturer's Limited Warranty*

PULSE ShowerspAs, Inc. warrants that all ShowerspAs are free from defect in workmanship and/or materials for a period of three years from the date of purchase. This warranty extends to the original purchaser only and is non-transferable.

This warranty does not cover, and PULSE ShowerspAs will not pay for conditions, malfunctions or damages resulting from (1) normal wear and tear, improper installation, whether performed by a contractor, service company or the consumer, improper maintenance, misuse, abuse, negligence, accident or alteration; (2) the use of abrasive and/or caustic cleaning agents or "no-rinse" cleaning products or the use of the product in any manner contrary to the product instruction; or (3) conditions in the home such as excessive water pressure or corrosion.

Should any Showerspa be determined by PULSE ShowerspAs, Inc. to be defective in normal residential use, at the option of PULSE ShowerspAs, Inc., such product shall either be replaced or repaired and returned to the customer free of defects. The consumer shall give notice of any defects to PULSE ShowerspAs, Inc. within thirty days of discovery of such defect.

Proof of purchase (original sales receipt) must be provided to PULSE ShowerspAs, Inc. with all warranty claims. PULSE ShowerspAs, Inc. is not responsible for labor charges, removal charges, installation or other consequential costs. In no event shall the liability of PULSE ShowerspAs, Inc. exceed the purchase price of the ShowerspAs.

Some states/provinces do not allow limitations of how long an implied warranty lasts or the exclusion or limitation of such damages, so these limitations and exclusions may not apply to you. This warranty gives the consumer specific legal rights. You may also have other rights that vary from state/province to state/province.

Follow manufacturers recommended installation. Use caution with children under ten years of age. Do not use ShowerspAs as a support device. Do not use harsh chemicals or abrasives when cleaning. Turn water supply off when servicing ShowerspAs.

*PULSE ShowerspAs, Inc. ♦ 49-A Hangar Way Watsonville, CA 95076 ♦ U.S.A.  
Tel: 831-724-7300 ♦ Fax: 831-724-7390 ♦ Toll Free: 888-785-7320  
Email: [info@pulseshowerspAs.com](mailto:info@pulseshowerspAs.com) ♦ website: [www.pulseshowerspAs.com](http://www.pulseshowerspAs.com)*

Part #: 1021-OM-ENG  
Rev: Y2010-08-03



# PULSE

SHOWERSPAS

**Installation Instructions**  
**Aloha Rain Shower System**  
**Model # 1021-SSB**



**Invigorate. Decorate. Rejuvenate.**

Congratulations on your purchase of a Aloha PULSE ShowerspAs. We take great pride in the styling, quality and workmanship of this product. With proper installation and care, your ShowerspAs will give you a showering experience like never before. Get ready to start your day in a whole new way and **FEEL THE PULSE!**

**If you encounter any problems during installation call customer service toll free at 888-785-7320 before returning item to store.**

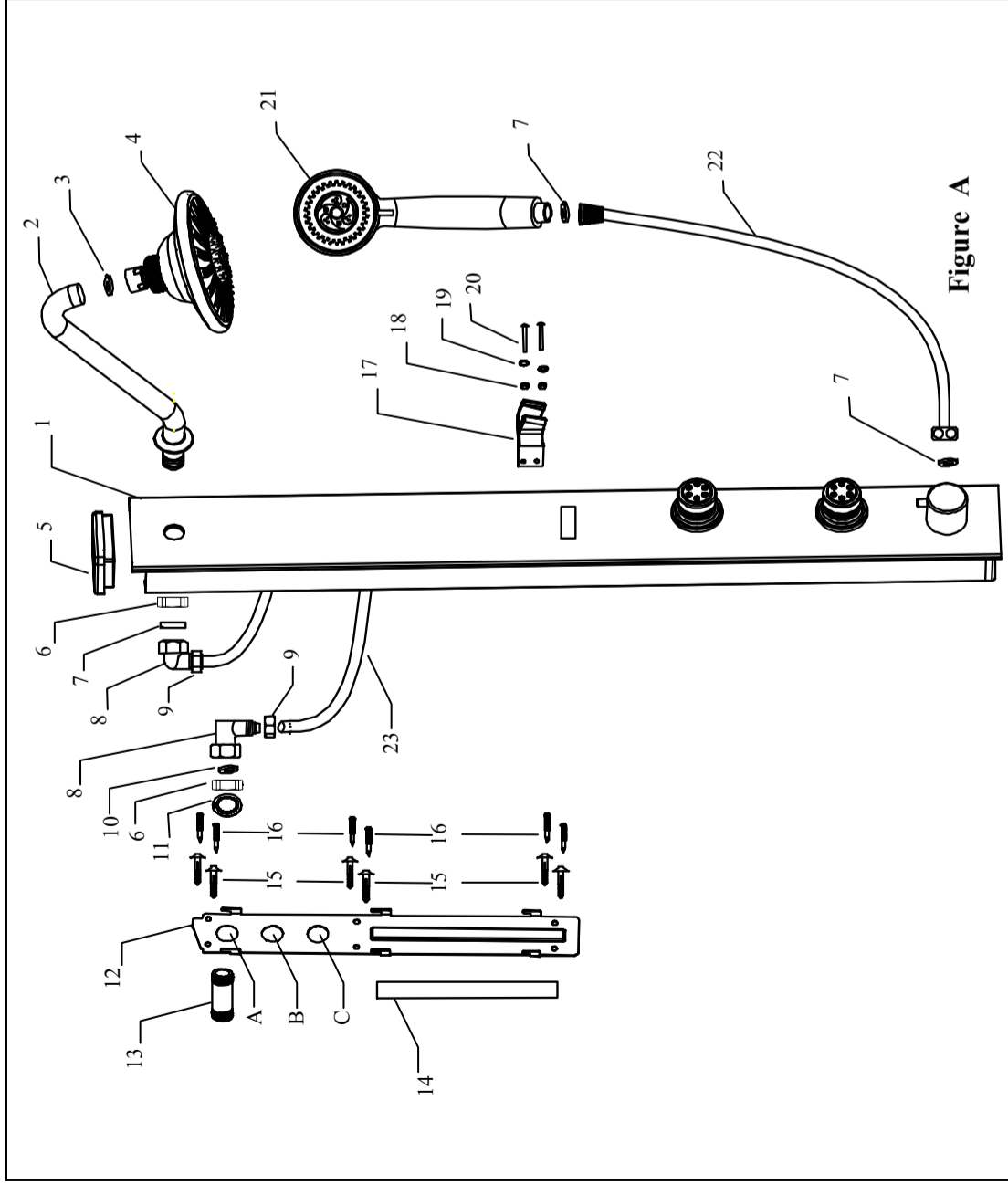
Please read these instructions carefully to become familiar with the components [See Figure A], installation procedures and tools required. Follow the steps in the order presented to help avoid any mistakes.

Tools required: Cordless Drill, 3/16in.(5mm) tile/masonry bit, hammer, adj. wrench, Philips screwdriver and pencil.

1. Insert mounting plate (12) into slots on back of Aloha (1). Hold Aloha (1) to wall and evaluate preferred mounting location based on height of shower arm, shower head, body spray height based on existing shower arm outlet. Determine which hole in mounting plate (12) will be used (A-top, B-middle or C-bottom) for preferred height. The convenient "cut to fit" supply line (23) allows these three options.
2. Remove shower head and any escutcheon (cover) from existing shower arm.
3. Determine length of ½ inch NPT nipple required:
  - a. Place mark on existing shower arm at the wall surface.
  - b. Unscrew shower arm from elbow in wall.
  - c. Measure distance from mark made on shower arm to end of shower arm threads.
  - d. Add ½ inch to this measurement, then round up to nearest ½ inch. (i.e. measurement = 1 ¾ in. + ½ inch = 2 ¼ in. rounded up to nearest ½ in increment = 2 ½ inch NPT nipple. **Note: If supplied 2 ½ in. nipple (13) is not correct length you must obtain the correct size - sold separately. NPT brass nipples are readily available at most hardware stores.**
4. Apply generous amount of Teflon tape and/or pipe sealant to nipple (13) and adequately tighten into elbow in wall ensuring no leaks. **Important: Do not damage or mar the final ½ inch of nipple threads protruding from wall.**
5. Insert shower arm (2) into body of Aloha Showerspa (1) and secure with nut (6). Insert washer (7) into 90 degree fitting (8) on shower arm supply line and securely tighten 90 degree fitting (8) to shower arm ensuring no leaks. **Caution: do not over-tighten.**
6. Attach handshower mount (17) to side of Aloha (1) with machine screw and non slip washer and nut.
7. **If using hole A for mounting continue to Step 10.** If using hole B or C of mounting plate (12) remove mounting plate from Splash. Loosen compression nut (9) and remove 90 degree fitting (8). Cut the supply line (23) at the predetermined mark depending on hole choice. **Important: Supply line must be cut clean and square to ensure no leaks - take your time, maybe even practice higher up on hose!**
8. Slide compression nut (9) onto supply line (23).
9. Push supply line (23) over barbed portion of 90 degree fitting (8) until it bottoms against base of threads.
10. Slide compression nut (9) onto 90 degree fitting (8) and securely tighten
11. Remove face of tape (14) from mounting plate (12) and slide plate over nipple (13) through predetermined hole A, B or C. Level plate before adhering to wall.
12. Push retaining washer (11) over nipple (13) securing mounting plate (12) to wall and/or use nut (6)
13. **Optional:** secure mounting plate using supplied wall fasteners. Drill 5mm (3/16in.) wide X 25mm (1in.) deep holes using a masonry/tile drill bit. **CAUTION: live (active) plumbing is behind the wall!** Insert mushroom head anchors (15) through plate and carefully hammer nail (16) flush to mushroom head anchor.
14. Insert washer with screen (10) into 90° fitting (8) and connect to nipple (13). Turn on water and check for leaks. Once leak free carefully slide Aloha (1) onto mounting plate (12) and push down to secure.
15. Insert 6mm washer (3) into showerhead (4) and attach to Aloha (1).
16. Insert washer (7) into each end of shower hose (22) and secure hex head to Aloha (1) and cone shape end to handshower (21).

**Usage:**

Use the diverter valve to select what function you want to enjoy. If you want two functions to operate at the same time, position the diverter selector between the two desired functions. It is best to wipe dry the Aloha Showerspa after each use to maintain it in new looking condition. Only use mild soap and water to clean the Aloha Showerspa. Never use any abrasives or harsh chemicals as they will damage the finish and void the warranty.



No.	Description	Qty.
1.	Aloha Showerspa	1
2.	Shower arm	1
3.	Rubber washer 6mm	1
4.	Shower head	1
5.	Top cover	1
6.	Brass nut	2
7.	Rubber washer 2mm	3
8.	90 degree fitting	2
9.	Compression nut	2
10.	Rubber washer with screen	1
11.	Retaining washer	1
12.	Mounting plate	1
13.	½ X 2½ inch brass nipple	1
14.	Two faced tape	1
15.	Mushroom head wall anchor	6
16.	1in. (25.5 mm) Nail insert	6
17.	Handshower mount	1
18.	Nut 4mm	2
19.	Non slip washer	2
20.	1 ¾ (36mm) machine screw	2
21.	Handshower	1
22.	Handshower hose 59 in. (1.5M)	1

